

# A Guide to Installing your Roller Shutter

A simple step by step guide

Contact our office staff now to discuss your security needs on:

Tel: 0800 137 683

or

Email: [sales@britanniasecuritygroup.com](mailto:sales@britanniasecuritygroup.com)





## Warranty and Life Cycle

The warranty for this product is only granted if:

- The installation is carried out by a competent installation engineer following these instructions.
- Only original parts are used.
- No additional objects are attached to the door.
- Regular maintenance checks are performed.



---

For further details on the products warranties please refer to the products price list and our terms and conditions which are available upon request. To comply with the Construction Products Directive all products have been durability tested for a minimum of 11,000 cycles.

---

Customers should use these instructions as guidelines and, if in doubt, should seek the help of a professional fitter or ask Britannia Security and Maintenance. We do not accept liability for any incorrectly fitted shutters that we did not do ourselves.

Contact our office staff now to discuss your security needs:

Tel: 0800 137 683

or

Email: [sales@britanniasecuritygroup.com](mailto:sales@britanniasecuritygroup.com)



## General Safety Advice

This document is intended for a qualified, trained installation engineer and should not be given to the owner of the door but should be kept by the installer.

To comply with the Construction Products Directive and the Machinery Directive the product must be installed in accordance with these instructions.

### **PLEASE READ ALL SAFETY ADVICE AND RELEVANT INSTRUCTIONS CAREFULLY.**

---

These installation instructions are intended for qualified and trained installation engineers. Installation, initial operation, servicing, repairs and dismantling of this product should only be carried out by a qualified and trained installation engineer.

When installing an electrically operated product ensure the mains power supply to the product is disconnected before any electrical connections are attempted.

Before operating a shutter you must always ensure that there are no persons or objects in the opening before and during the opening.

The shutter should only be operated when in view.

### **Upon completion of the installation the owner of the shutter must be trained how to operate the product safely paying special attention to the following points:**

---

- The shutter should only be operated when in view
- The operator should ensure there are no objects or persons in the opening before and during operation.
- The end user must read and follow the advice given in the operating and maintenance instructions.
- In the event of a malfunction the end user should follow the advice given in the operating and maintenance instructions and if applicable contact the installer.

**DURING THE INSTALLATION OF THE SHUTTER YOU SHOULD FOLLOW SAFE WORKING PRACTICES. FURTHER ADVICE IS AVAILABLE FROM THE HEALTH AND SAFETY EXECUTIVE (HSE).**



## Repairing/ Dismantling / Maintenance

Always isolate the mains power before attempting any maintenance, repairs or dismantling. If you need to use the optional remote control during any maintenance, repairs or dismantling procedure you must engage the commissioning mode.

**Before attempting to repair or dismantle a shutter you should check for the presence of any safety devices, for example:**

- Anti-fall back spring
- Anti-drop brake
- Bottom slat safety edge
- Safety photo cell

---

Before attempting to remove an axle assembly which contains a spring you must release the tension in the spring.

When repairing or dismantling a shutter you should keep the opening and the surrounding area clear to prevent risk of injury to yourself and others.

When repairing or dismantling a shutter you should follow safe working practices. Further advice is available from the Health and Safety Executive (HSE).

---

### Maintenance check list:

- Curtain free running and clean
- All end locks are correctly and securely located in the curtain
- No debris in the guide rails
- Guide rails and end plates are securely fastened to the wall (check also the fascia if fitted)
- If applicable all axle collars and locking springs are in the correct original position
- Check action of applicable locking devices to ensure they are engaging correctly
- If applicable motor cable is correctly retained, has not been damaged or in danger of being damaged
- If a remote control has been supplied check the functionality of the safety devices
- If required view the service counter on the remote control
- If an anti-fall back spring is fitted check that the spring is under tension when the curtain is in the fully closed position. You should not be able to turn the spring shaft located in the u-cup.
- Check the operation of the manual override.





## Tools/ Fixings Required

**This list of tools and fixings is a minimum guide, to be adapted for each installation.**

- Drill with pneumatic/hammer action to take the drill bits used below
- 10mm & 22mm masonry bits up to 400mm long (or wall thickness)
- 3, 4.2, 5, 10 & 13mm metal drill bits
- Countersunk posidrive type fixings or similar, with appropriate masonry drill bits and rawl plugs for guide rails and shutter box
- Guide rails and end plates require at least 2 1/2 inch 10s or 12s twin threaded screws with brown rawl plugs
- To secure the shutter box to the wall use at least 1 1/2 inch 8s screws with red plugs. A 250mm long masonry drill bit will be required
- Screw drivers and wire strippers · 4mm & 6mm Allen keys
- Pliers
- Tin Snips
- Metal files - round, half round and flat · Spirit level
- Straight edge (square)
- Plastic hammer
- Tape measure
- Marker pen
- 3 core and 4 core cable
- Junction box
- 3 amp plug
- Surface trunking
- Motor test lead (YEC38400)
- Hacksaw
- Pop riveter with 4mm brown or white rivets
- Dust sheets
- Step ladders
- Workmate bench (optional)
- Silicone gun with brown, white or clear silicone
- If the fitting surface is not flat or there is a projecting door handle, painted timber may be required to form a sub frame. Alternatively 20/50 x 50mm aluminium packers or pieces of guide rail may be used
- If the shutter box is to fit up into a soffit, a circular saw or jigsaw will be needed to cut the soffit board.

Contact our office staff now to discuss your security needs:

Tel: 0800 137 683

or

Email: [enquiries@britanniasecuritygroup.com](mailto:enquiries@britanniasecuritygroup.com)



## Preparation for the Installation

The structure of the opening must be adequate to take the weight of the door and suitable to take the appropriate fixings.

### RISK OF MATERIAL DAMAGE

Check that the opening is ready for installation. Surfaces should be flat and vertical to guarantee a parallel alignment of the guide rails. It is important that you check that the lintel does not bow inwards or have any projections that may catch on the curtain or could push the box back towards the curtain. If in doubt pack the guides and box out by at least 10mm. Before you begin installing the shutter you should check that the shutter will not foul on any opening doors or windows or projecting door handles.

### RISK OF MATERIAL DAMAGE

Check the dimensions of the opening to ensure that the product supplied is the correct size to suit the opening. This must be done before removing any existing products and before you begin installation of the shutter.

To avoid damages to the box and the curtain unpack the components very carefully. We recommend using the packaging supplied as a protective mat.

Check the packages you have received to ensure you have received all the parts you require and they are in a satisfactory condition before you begin installation of the shutter.



## Electric Roller Shutter Instructions

### General Parts

- Assembled axle assembly (1 per shutter)
- Pair of flag assemblies (angle, guides, and endplates)
- Assembled curtain (depending on the shutter size may be supplied in sections)
- Steel hood
- Installation Instructions
- Operating and maintenance instructions

### Operation specific parts

- Override handle (1 per shutter if manual override)
- Override handle clip (1 per shutter if manual override)

### Electric control method (depends on method requested):

- Switch (with back box surface/flush)
- Key switch
- Remote control kit
- Group command
- Battery back up

Accessories are packed in a separate box.

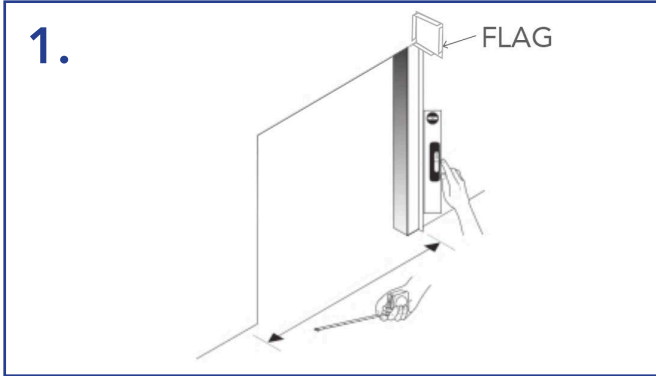
If applicable angle & packer are usually packed with the guide rails.

Override handles

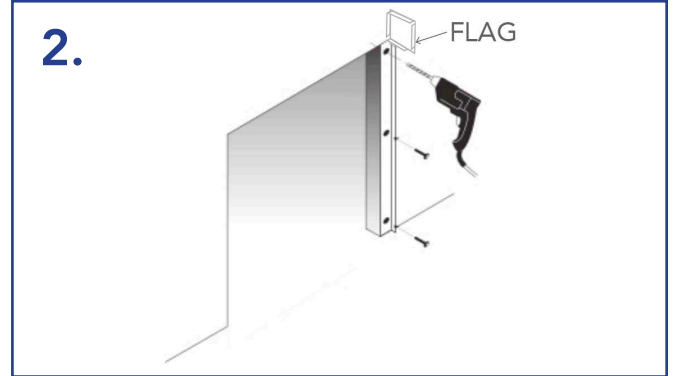
# INSTRUCTIONS



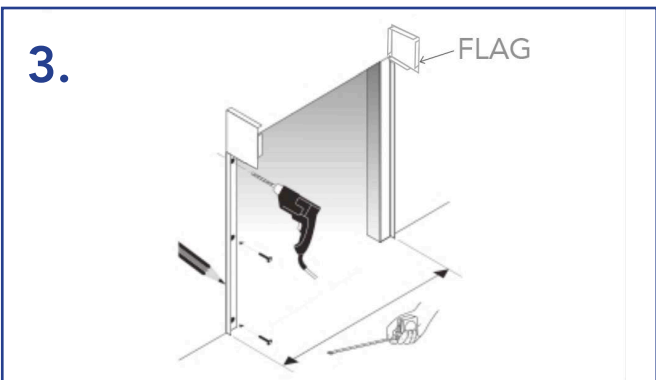
## Electric Roller Shutter Instructions



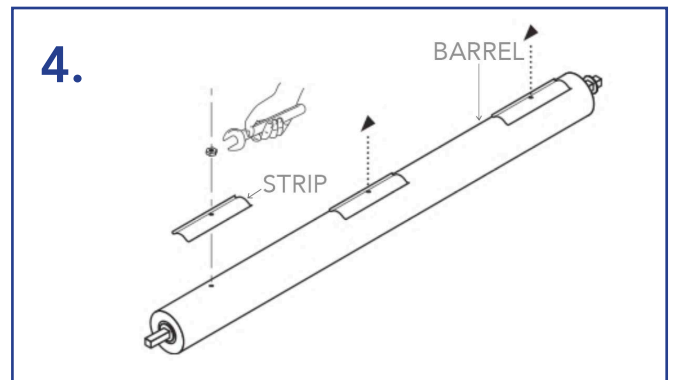
1. Measure the opening to determine the location of the first flag plate. If the floor is sloping you must fit the higher side first. Fix the angle to the wall using the correct fixings to suit.



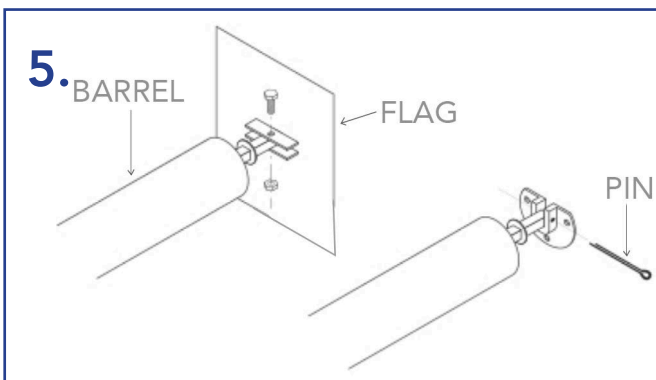
2. Make sure the Flag plate is fixed to the wall vertically at 90 degrees and flush with the wall.



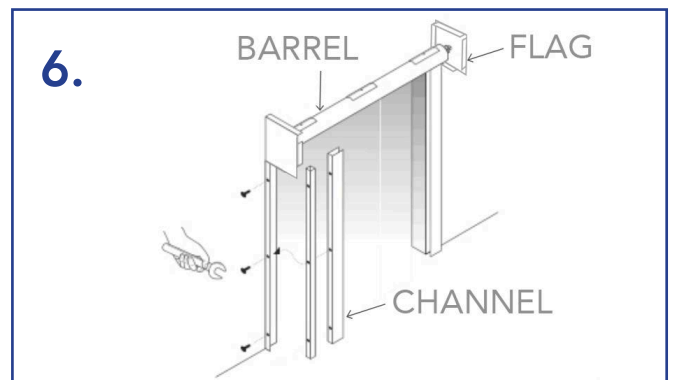
3. Measure from the first flag to determine the position of the second flag ensuring that the angles are vertical and also that the tops of the end plates are level. Fix the angle to the wall.



4. Remove the attachment strips/lath from the Barrel.



5. Attach the Barrel to the end plates using the fixings provided. You must ensure that the bolts located along the length of the barrel for curtain attachment will be available for step 1



6. Attach the channels to the angles

Contact our office staff now to discuss your security needs:

Tel: 0800 137 683

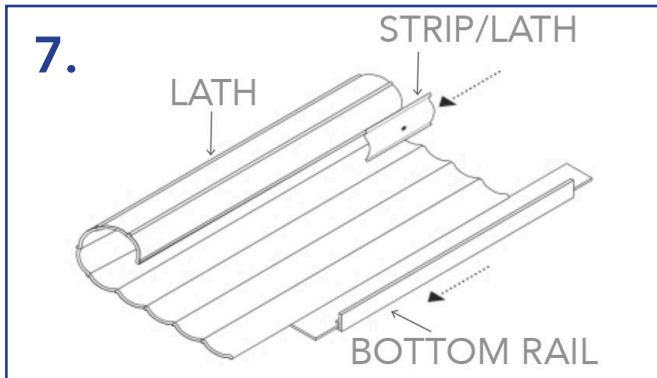
or

Email: [enquiries@britanniasecuritygroup.com](mailto:enquiries@britanniasecuritygroup.com)

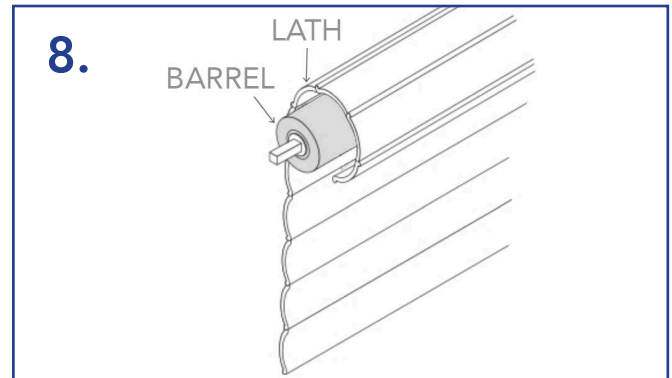




## Electric Roller Shutter Instructions



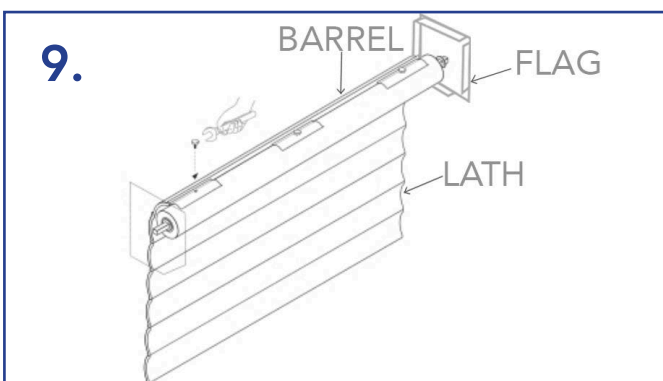
7. Slide the attachment strips/lath on to the curtain



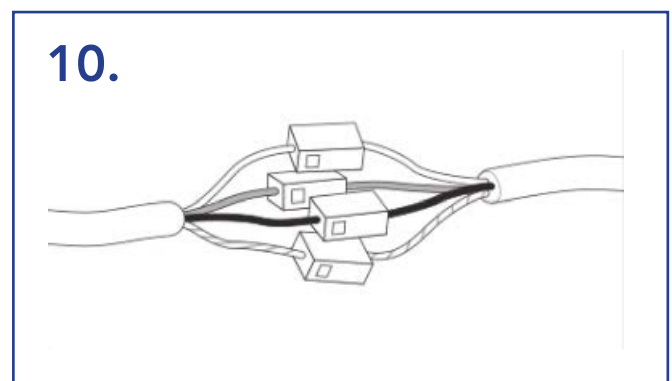
8. There are two alternative methods for assembling the curtain:

**Method 1** (If limited room, may require mechanical lifting assistance). Slide the sections of curtain together before loading in the guide channels.

**Method 2** Attach the top section of the curtain to the axle then rotate the axle in the up direction to roll the curtain around the axle. Then attach the next section of the curtain to the bottom of the first section. Repeat this process if applicable. Once all the curtain is coiled around the axle it can be lowered down into the guide channels



9. Attach the curtain to the axle using the attachment strips/lath provided.

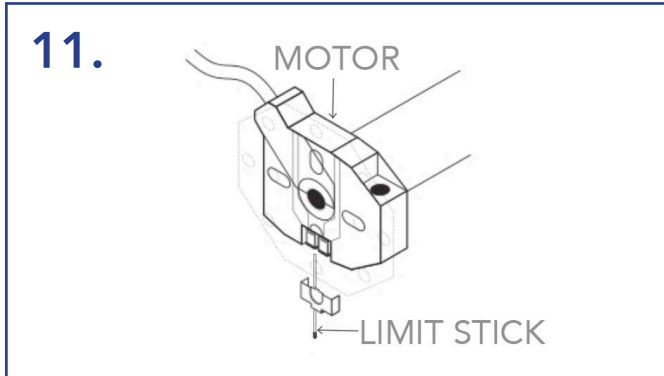


10. It is recommended that you use a test lead to set the motor limits or if a remote control is being supplied set the remote control into commissioning mode. If a remote control is not being used or if you do not have a motor test lead please note this is not the correct orientation please refer to section 13 the motor should now be wired to the switch supplied.

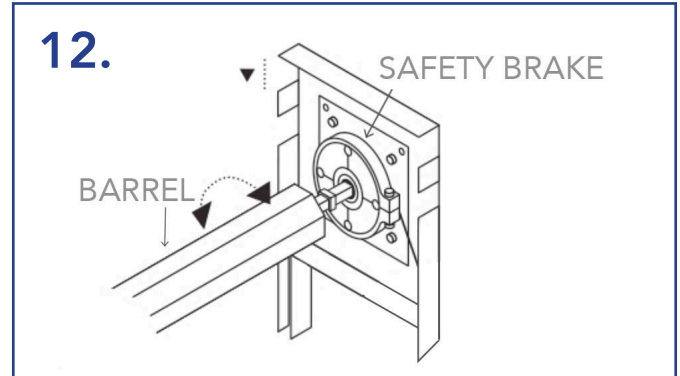
# INSTRUCTIONS



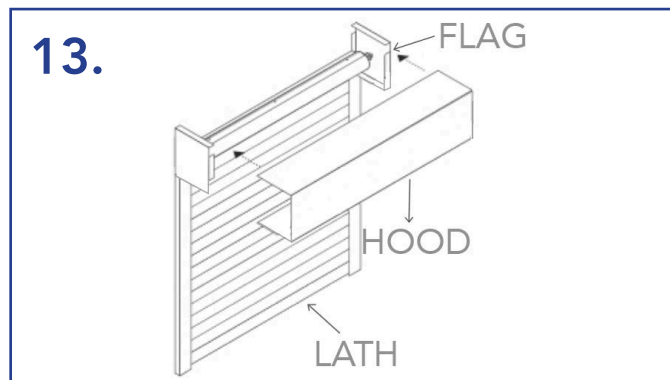
## Electric Roller Shutter Instructions



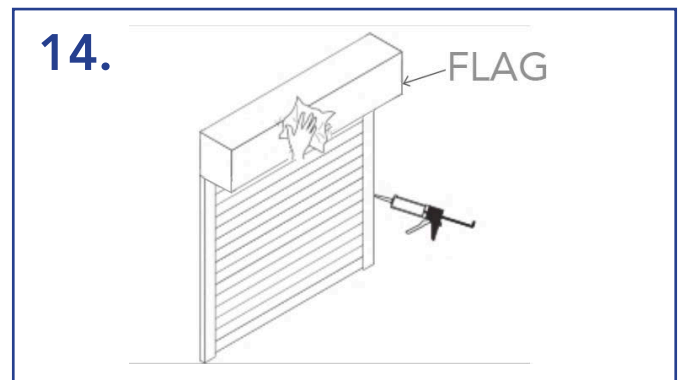
If applicable check anti-fall back device



Set the motor upper and lower limits using limit stick provided while sending the shutter up/down



If required fit the hood/fascia. If the shutter is externally fitted the hood/fascia should be fastened using appropriate rivets/tek screws.



Test the operation of the shutter to ensure that the shutter moves freely up and down in the guide rails and that the shutter stops at its preset fully open and fully closed limits. If a remote control has been supplied with safety devices these should also be checked at this stage. To complete the installation you should mastic around the edges of the shutter then give the shutter a final clean and tidy.

Contact our office staff now to discuss your security needs:

Tel: 0800 137 683

or

Email: [enquiries@britanniasecuritygroup.com](mailto:enquiries@britanniasecuritygroup.com)

# INSTRUCTIONS



Upon completion of the installation the owner of the shutter must be trained how to operate the product safely paying special attention to the following points:

- The shutter should only be operated when in view
- The operator should ensure there are no objects or persons in the opening before and during operation.
- The end user must read and follow the advice given in the operating and maintenance instructions.
- In the event of a malfunction the end user should follow the advice given in the operating and maintenance instructions and if applicable contact the installer.

If applicable complete CE documentation and label the product to comply with the Machinery Directive.

Contact our office staff now to discuss your security needs:

Tel: 0800 137 683

or

Email: [enquiries@britanniasecuritygroup.com](mailto:enquiries@britanniasecuritygroup.com)